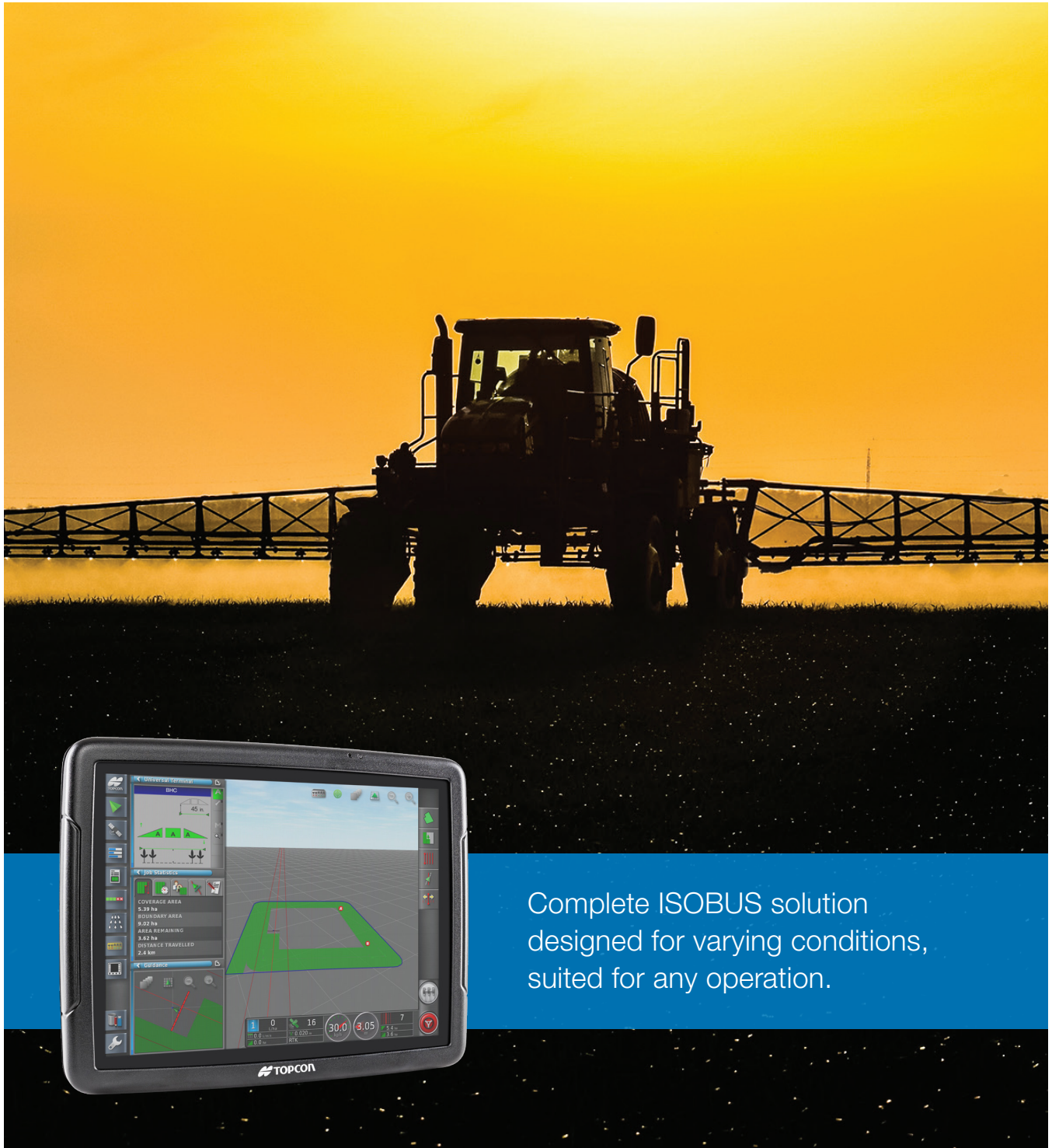


# Boom Height Control



Complete ISOBUS solution  
designed for varying conditions,  
suited for any operation.

---

# Crop Care

## Automatic boom height control

As both sprayers and precision capabilities have grown, manual machine and implement control has become increasingly difficult. In order to utilize this increased potential, automation becomes necessary. That's why Topcon has developed a comprehensive suite of guidance, crop monitoring, implement control and data services technology. Acting as the glue that enables accurate and advanced application control, Norac Boom Height Control provides consistent preset height for even application and reduced drift.

Using time- and field-proven ultrasonic sensor technology, the Norac UC7 Boom Height Control solution makes responsive height adjustments allowing booms to automatically follow the contours of the land. The solution also reduces the need for the operator to move their head back and forth to monitor changes in field terrain, thereby reducing stress and fatigue. This allows the operator to focus on machine operation and safety. Providing various levels of control based on needs, the solution is designed for any operation and is compatible with a wide range of machines.

---

**Consistent preset height, providing even application and reduced drift**

---

**ISO-UT compatibility for display flexibility**

---

**Easy to install, setup and use, reducing stress and boom damage**

---

**Capable of night and high-speed operation, boosting efficiency**







## Solution Overview



1

### Touchscreen Console

ISO-UT compatible display, including Topcon Pulse, X25, and X35



2

### Implement Controller

Norac HCM1 controller for proven reliability and clear calibration



3

### Ultrasonic Sensor

Norac Ultrasonic Sensor for precise and proven sensing



4

### Proportional Valves

Proportional Valve on each wing to ensure smooth independent hydraulic control

## Key Solution Features

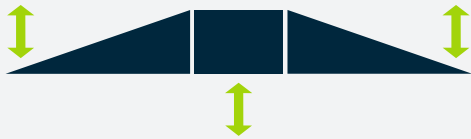
- Automatic boom control ensuring implement maintains desired height.
- Advanced ultrasonic sensor technology featuring Hybrid Mode for reliable control in difficult conditions, such as washed out areas, thin or lodged crop, or wheel tracks.
- Roll compensation allowing for effective boom height control without altering the boom from its original design. The solution monitors and compensates for boom section roll, contributing to stability.



# Crop Care

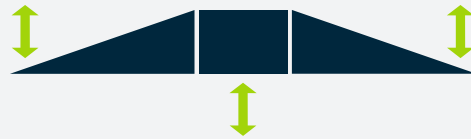


## Levels of Norac UC7 Boom Height Control



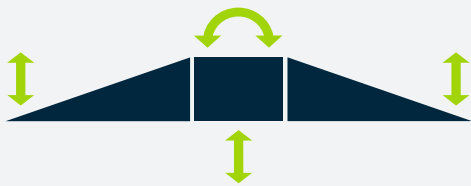
### Standard Control™

Basic, low-cost height control solution for smaller booms (up to 30 m). Ideal for mild, flatter terrain.



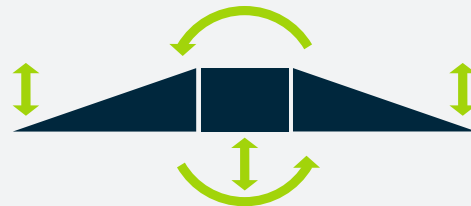
### Passive Roll™

Advanced, most popular height control solution offered for nearly all sprayer models on the market. Fully capable in challenging terrain.



### Active Roll™

Premier height control solution designed for all boom sizes. Developed for inconsistent, challenging terrain.



### Active Wing Roll™

Premier height control solution, compatible with nearly every boom on the market. Developed for inconsistent, challenging terrain.

## Complementary Solutions



### Guidance

Manual and auto-steering solutions



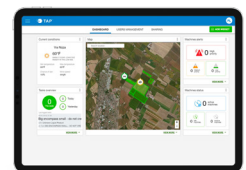
### Apollo Spraying Controller

Spraying implement control



### Crop Health Monitoring

Timely information for optimized applications



### Data Services

Digital farm management and telematics



Specifications subject to change without notice.  
7010-2275 B 8/20 ©2020 Topcon Corporation

Topcon Agriculture is a business unit of  
Topcon Positioning Group.

[www.topconagriculture.com](http://www.topconagriculture.com)

