

Topcon Guidance Technology

Manual Guidance and Autosteering



Our technology guides machines
to reduce inputs and improve yield.



Learn more at topconpositioning.com

 **TOPCON**

Your Guide to Profit

Positioning isn't just a foundation; it's the key to unlocking precision in every aspect of farming. Our diverse range of solutions optimizes machine inputs, boosts labor efficiency, and maximizes your yield potential. For basic tasks, our manual guidance systems provide reliable accuracy, but the true power of Topcon shines with our automatic guidance systems. These advanced solutions minimize fuel use, reduce wear and tear on equipment, eliminate overlap, and drastically cut down on operator errors. By automating precision tasks, we help you increase yield through reduced soil compaction and precise application, ensuring your crops receive the nutrients they need for optimal growth.

Whether you're using manual guidance or fully automated steering, with Topcon, you have access to a wide suite of positioning solutions that integrate seamlessly with your machinery, making your operations more efficient, productive, and profitable.

- » Position-based (GNSS) manual and automatic steering for many agricultural machines
- » Reliable hardware - receivers, controllers, and displays
- » Range of accuracy options upon operational needs
- » Suite of complementary Topcon solutions and compatibility with 3rd parties



Reduce Key Inputs



Empower Labor



Improve Fertility and Yield



Correction Services

Options for every scenario



GNSS Receiver

Reliable positioning



Electric Steering Wheel

Powerful hands-free control



Display

Smart touchscreen consoles



What's right for your operation?

Topcon offers flexibility. Whether it's manual- or automatic guidance, we have a solution for your needs. Our manual guidance solutions offers an easy-to-follow on-screen lightbar for basic applications, while our automatic guidance steering lets you go hands-free for

many applications. Explore our suite of key solutions across the crop cycle to further automate laborious workflows. With our straightforward approach, you can upgrade when it makes sense for your operation.

Manual guidance or autosteering?

Manual Guidance



AGM-1
GNSS Receiver

Value Line Steering¹



XR-1
GNSS Receiver

Premium Line Steering



AGS-2
GNSS Receiver

Choose your console.

Manual guidance with access to all Topcon solutions, plus ISOBUS implement control



XD (7'') or XD+ (12.1'')

Autosteering plus ISOBUS-UT compatibility



XC1 (7'') or XC1 plus (10'')

Autosteering with access to all Topcon solutions, plus ISOBUS implement control



XD (7'') or XD+ (12.1'')

Steering controller based upon vehicle capability.

Steer-Ready or Non-Steer Ready



XW-1
Electric Steering Wheel

Steer-Ready or Non-Steer Ready

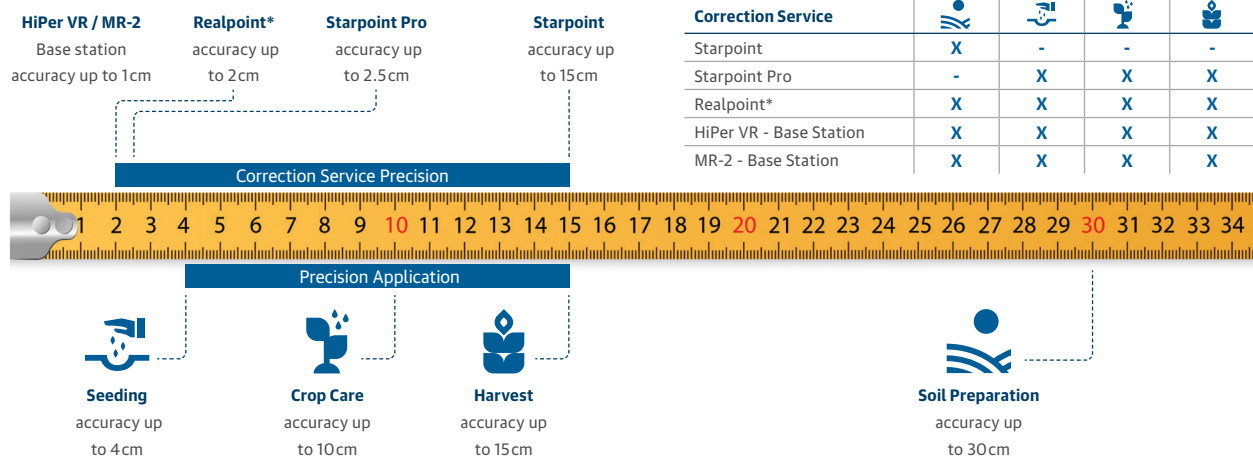


ACU-1
Steer Ready
Interface

AES-35
Electric Steering
Wheel

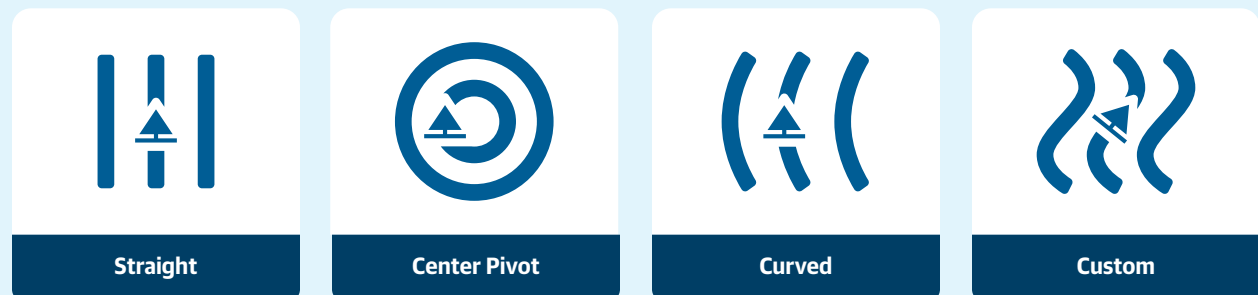
¹ Value Line Steering is only compatible with front wheel steer tractors

How precise do you need to be?

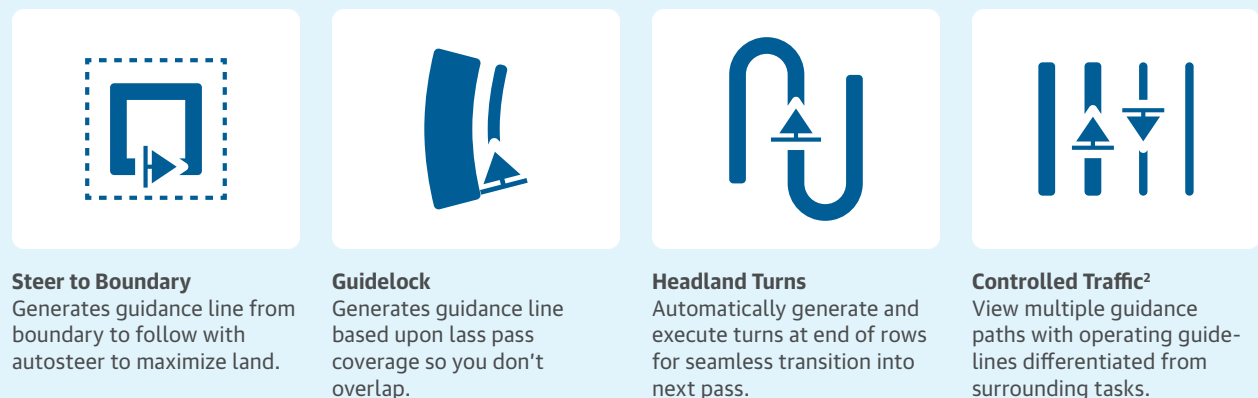


*Local coverage varies, confirm availability with local dealer (Preferred cellular source as Cloudlynk device (CL-20 and CL-55) and TAP NTRIP)

We offer guidance patterns for every application



Steer smart with relevant features



² Feature not offered in Value Line Steering

Learn more at topconpositioning.com



Our in-cab operating software automates key activities

Topcon in-cab operating software (Horizon OS) is all about efficiency and connectivity. Its easy usability makes setup efficient and operators confident.



Auto Section Control (ASC)³

Auto section control (ASC) is a function of application control that switches sections of an implement in order to apply inputs more precisely. Our feature is compatible with Topcon and 3rd party ISOBUS controllers to prevent over-application and follow precision management strategies.

Variable Rate Control (VRC)²

Variable rate control (VRC) is a function of application control that varies the output rate of an implement in order to apply inputs more precisely. Our feature is compatible with Topcon and 3rd party ISOBUS controllers to optimize inputs, boost production, and follow precision management strategies.



Machine Link²

Machine Link is a connectivity feature that allows multiple machines to collaborate in-field by sharing live coverage and application data. Task data is seamlessly connected across machines so all operators can view overall progress to work more effectively and avoid duplicate effort.

² Feature not offered in Value Line Steering

³ Value Line Steering does not provide full functionality, only virtual implement capability



XTEND²

XTEND is an app that extends Horizon UI windows and elements to virtually any modern iOS or Android mobile device. Use as an additional screen in-cab or even outside for calibrations and loading activities.



ISO BUS Implement Control⁴

Display compatibility for ISO BUS protocol solutions. Integrate with ISO ECUs for automatic control and mapping.



Cameras²

Integrate digital cameras (AgCams) into interface.

Lean on reliable dealer networks including remote support

Our trained dealers and extensive support network is here to help. Our remote support capability, allowing

3rd parties to connect to your display make it even more efficient.



Remote Support



Collect data and make better decisions with our cloud software, the Topcon Agriculture Platform (TAP)

Designed for farmers, dealers, agronomists, and input suppliers who need to gather and consolidate key operational information, the Topcon Agriculture Platform (TAP) brings connectivity to every phase of the farming cycle. TAP is a simple tool to organize, visualize, and automate information, helping farmers make better decisions based on data from across the entire operation. With TAP, we now offer a comprehensive and clear path into digital farm management.



² Feature not offered in Value Line Steering

⁴ Value Line Steering only provides ISO BUS-UT functionality

Easily connect consoles to our cloud software

1



Console

Easily connect current or legacy Topcon X Family consoles to the Topcon Agriculture Platform, including the XD, XD+, X25, X35, and X30.

2



Data Transfer⁵

Plug-in a Cloudlynk data transfer device, including the CL-20 and CL-55 into your X Family console to seamlessly transfer data to TAP via cellular networks. Alternatively, use our Wi-Fi dongle or even a classic USB to manually transfer data.

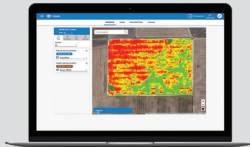
3



Topcon Agriculture Platform (TAP)

Combined with an X Family console and Cloudlynk data transfer device, the Topcon Agriculture Platform (TAP) automatically ingests data, helping you organize, visualize and make better decisions.

Flexible subscriptions and powerful addons



TAP Fields

Easily organize, visualize, and decide



TAP Fleet⁶

Track the fleet and monitor metrics



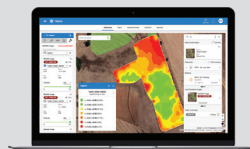
TAP Pro

Streamline transfer and track the fleet⁶



Grain Cart

Automatic upload of Topcon harvest cart data



Satellite imagery

Measure crop and field health for insights that lower risk

⁵ Value Line Steering only compatible with CL-20 device

⁶ Not compatible with Value Line Steering

Our guidance, implement control and crop monitoring solutions are compatible with most farming machines



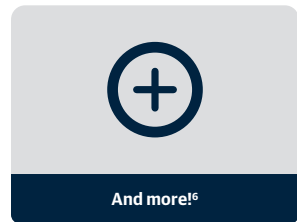
Tractors¹



Sprayers⁶



Harvesters⁶



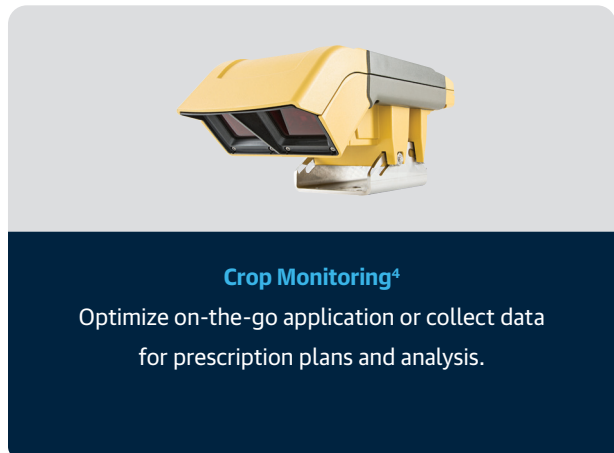
And more!⁶

We offer long term strategy through complementary solutions



Implement Control⁴

Key ISOBUS and Topcon Horizon OS based solutions across the crop cycle seamlessly tied to guidance and autosteering.



Crop Monitoring⁴

Optimize on-the-go application or collect data for prescription plans and analysis.

Topcon Solutions

- 3D Landforming
- Tillage Depth Control
- Seed Drill Control
- Broad Acre Seeding Control
- Row Crop Planting Control
- Spreading Control
- Spraying Control
- Boom Height Control
- Crop Monitoring
- Yield Monitoring
- Grain Cart Weighing
- On-Board Weighing

¹Value Line Steering is only compatible with front wheel steer tractors

⁴Value Line Steering only provides ISOBUS-UT functionality

⁶Not compatible with Value Line Steering

Specifications subject to change without notice.

© 2024 Topcon Corporation. All rights reserved. 7010-2429 B 08/24