



**TAP**

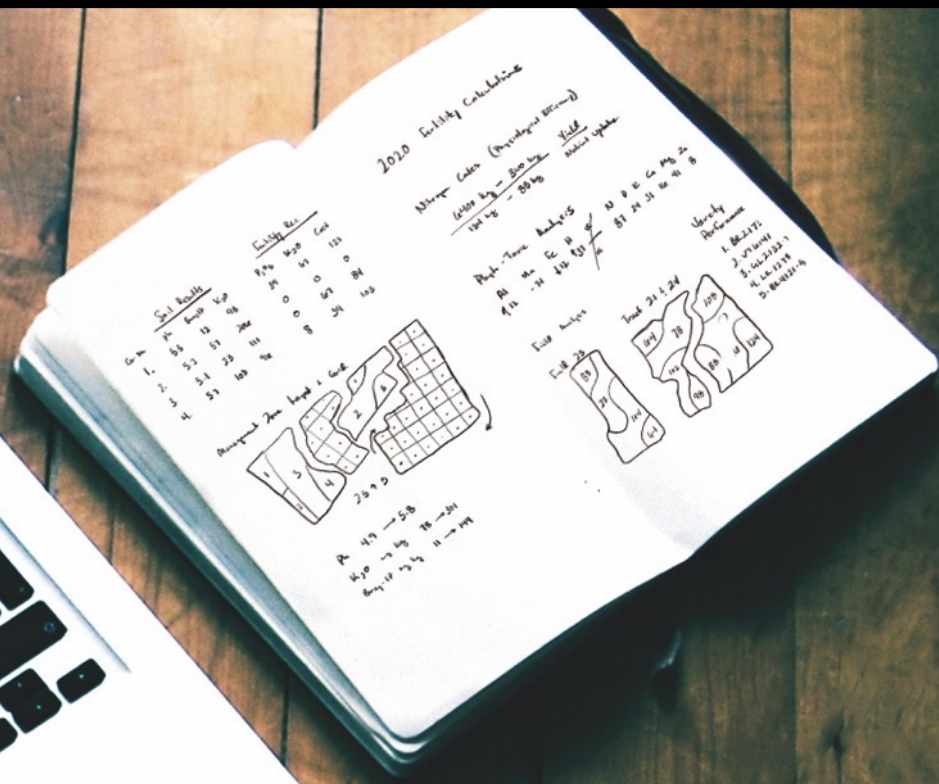
Topcon Agriculture Platform



Organize. Visualize. Decide.

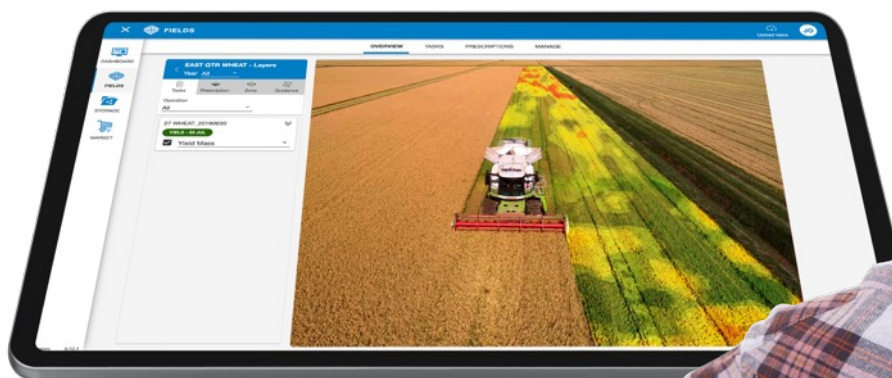
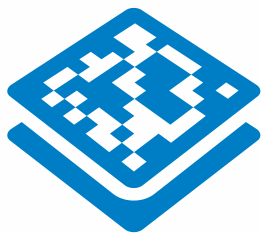






Join the Path  
to Connected Precision.





An easy-to-use tool to organize,  
see and act on data from across  
your farm.





The [Topcon Agriculture Platform \(TAP\)](#) brings connectivity to every phase of the farming cycle, completely automating the data workflow, so users can focus on action.





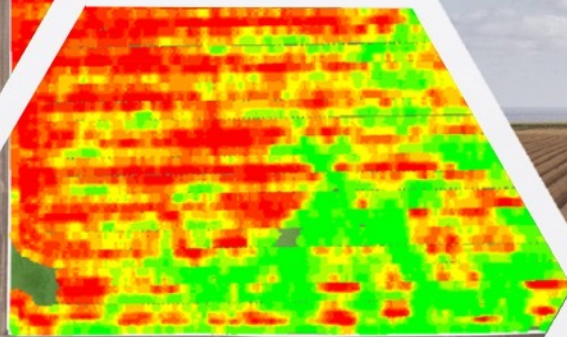
Easy to use drag-and-drop interface to see and act on data that flows in from equipment.



Securely manage and share data with trusted partners.



SPRAYFLEX 4.04\_20190507  
AS APPLIED - 07 MAY  
☐ Actual Rate  
SPRAYFLEX 4.04\_20190507  
CROP SPEC - 07 MAY  
☒ Sensor RDNG



 **TAP**  
Topcon Agriculture Platform

## A smart model

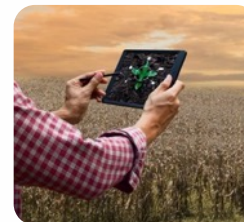
A model in which all stakeholders can collaborate through a digital platform that provides accurate analysis to support the farmer's decision-making process.



Collect / Apply



Track



Prove



Improve





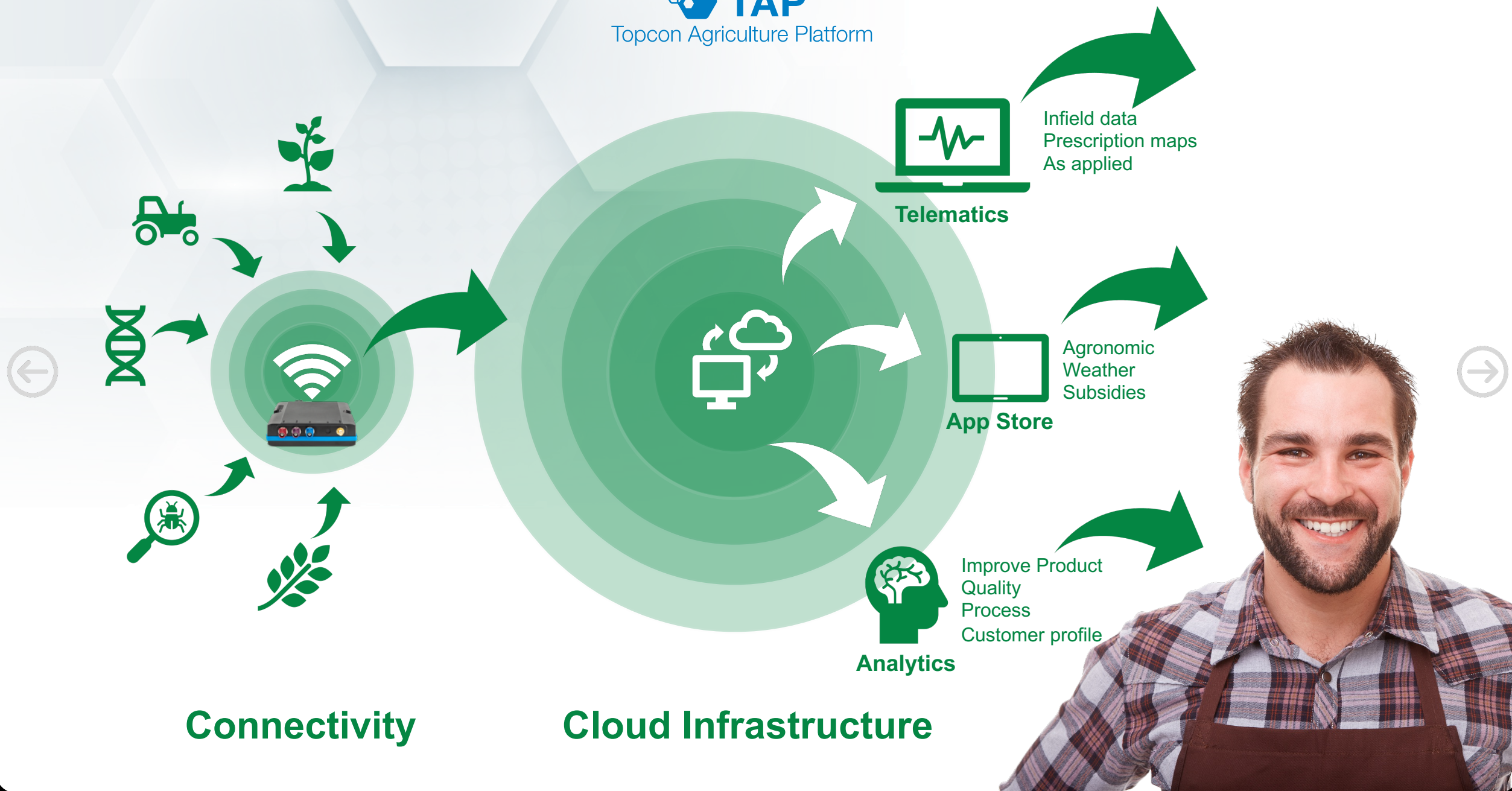


## Collaborative Platform

Designed for farmers and agronomists who need to gather and consolidate information to make key, management decisions.

TAP is an open, brand-neutral platform that provides data management straight from the field, through analysis, mapping and delivery of actionable outputs directly to the machine.









## Value for All Stakeholders

Constant connectivity, any data format, clear visualization, and secure sharing.

- Farmers can control all data in one platform and focus on action.

Input Companies

[Learn More](#)



Input Dealers

[Learn More](#)



Co-Op / Agronomy Center

[Learn More](#)



Farmers

[Learn More](#)







## Dashboard

Organize operations and tasks in customizable widgets.



## Fields

Layer all field data for agronomic insights. Visualize and decide.



## Storage

Efficiently cleanse, organize, and share nearly all data formats.



## Fleet\*

Connected fleet management. Track and monitor metrics to boost efficiency.



## Support

Complete direct support in-cab for Topcon consoles.



## Marketplace

Subscription management portal for transparency and efficiency. Pay only for what's needed.

\*Cloudlynk devices required.





TAP Any Data, Anytime



Field and Fleet  
Management

Relevant  
notifications

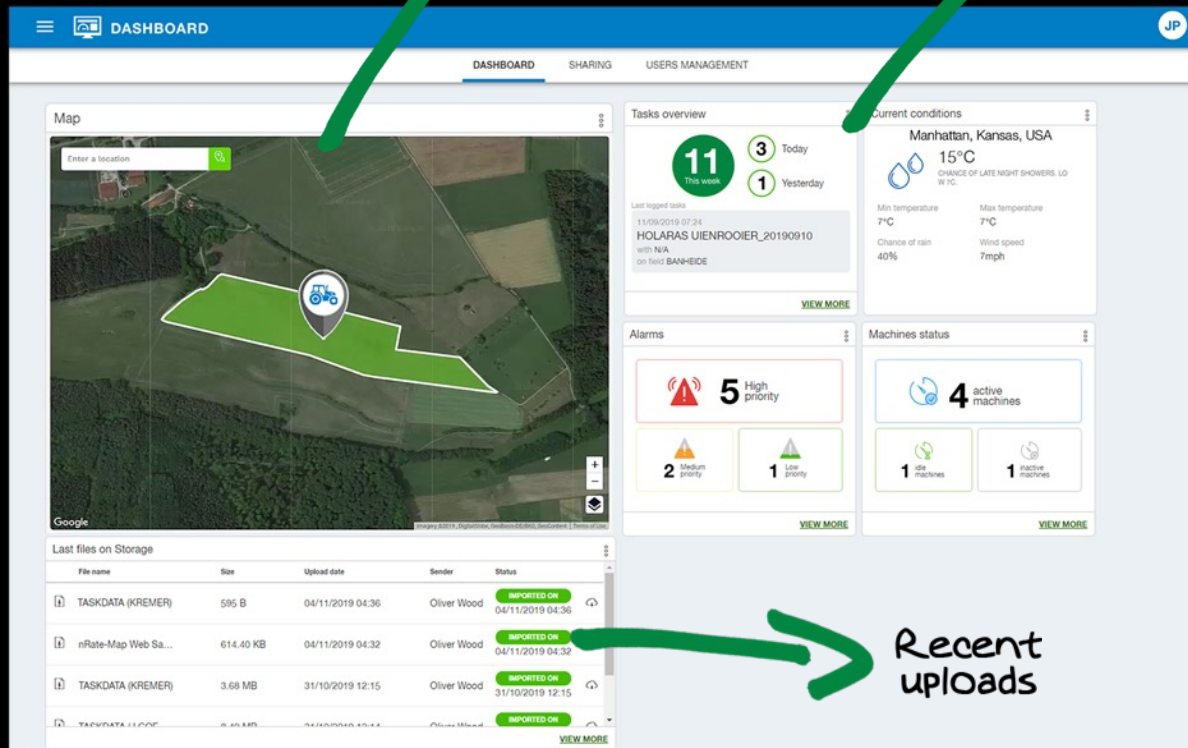


**Dashboard**  
Organize operations in  
customizable widgets.

[Learn More](#)



Recent  
uploads





Activity Management

Advanced Visualization

Data Layer Management



Fields

Merge and visualize data layers to unlock agronomic insights. Manage prescriptions with partners directly through TAP.

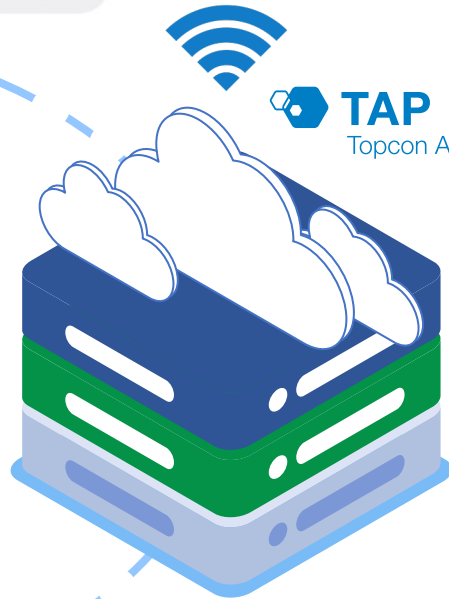
[Learn More](#)







Analysis



**TAP**  
Topcon Agriculture Platform



Spraying Prescription Map





Brand specific Yield Map



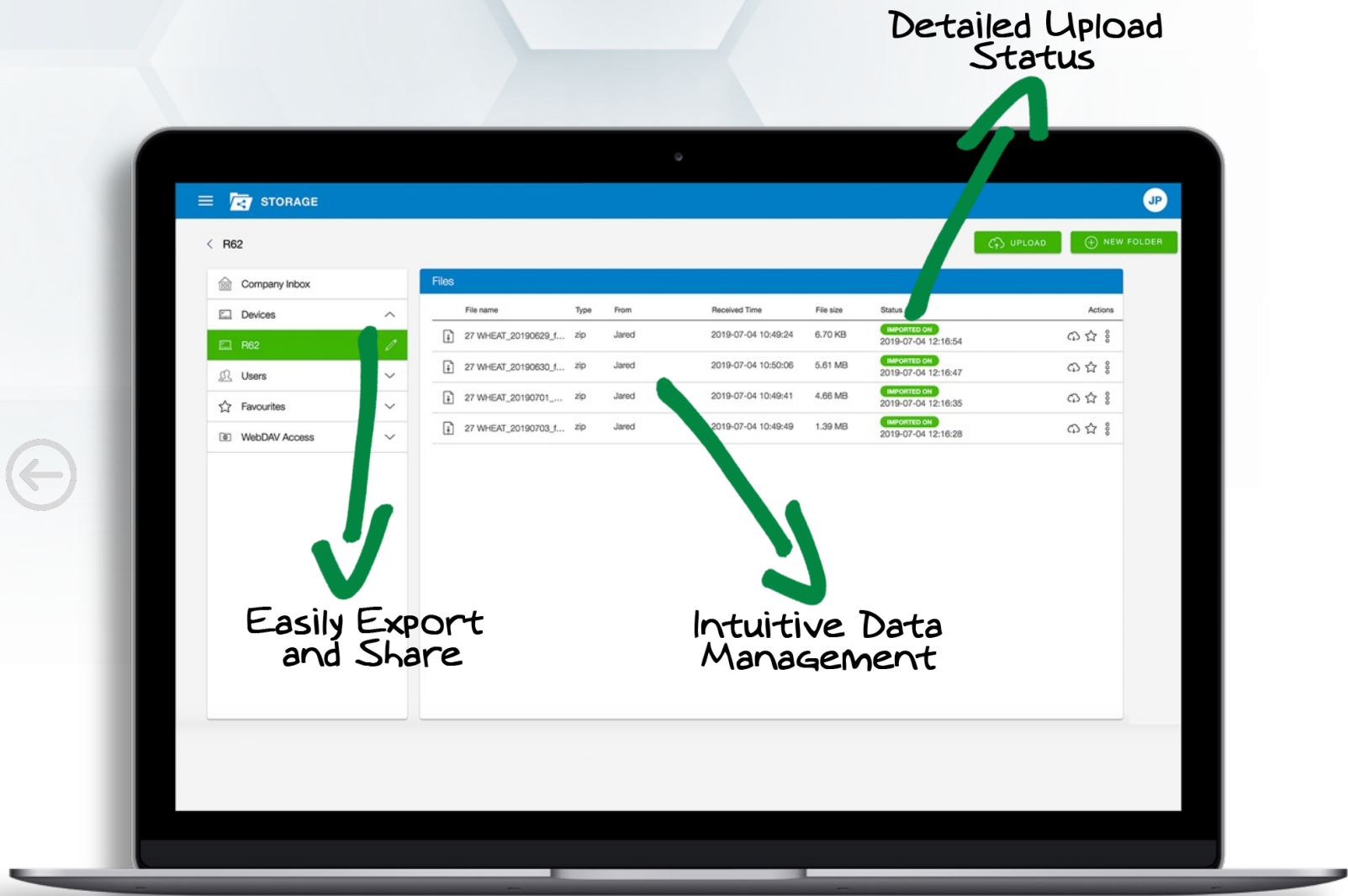
Brand specific Seeding Prescription Map



**TAP**  
Topcon Agriculture Platform







Detailed Upload Status

Easily Export and Share

Intuitive Data Management



## Storage

Upload and manage nearly any data format. Easily export or share directly through TAP with trusted partners.

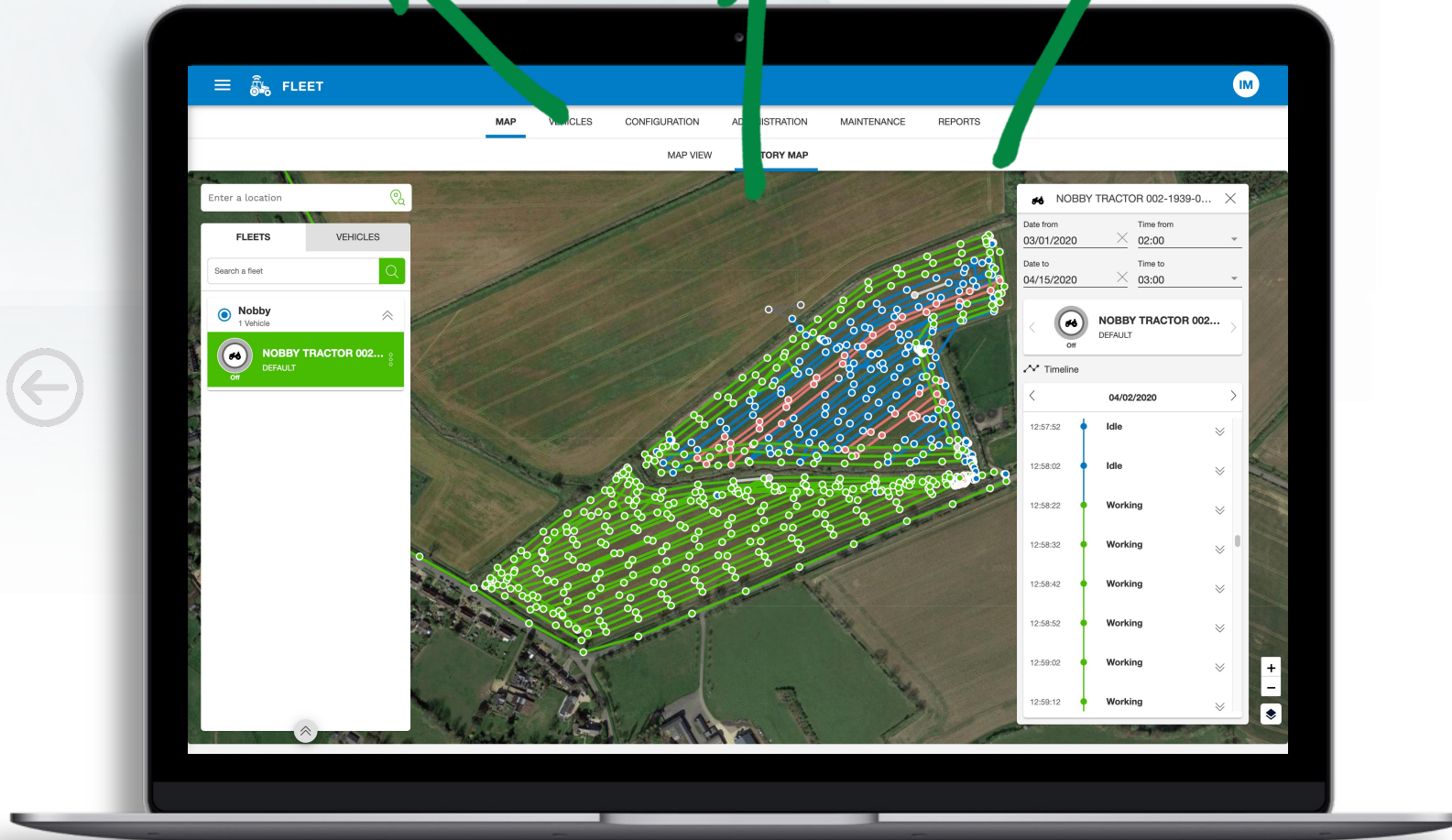
[Learn More](#)



Clear, Exportable  
Reports

Vital Metric  
Monitoring

Real-Time  
Management



## Fleet

Track and monitor vital machine metrics to reduce downtime and boost operational efficiency.

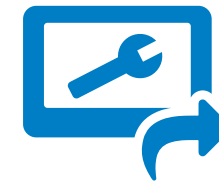
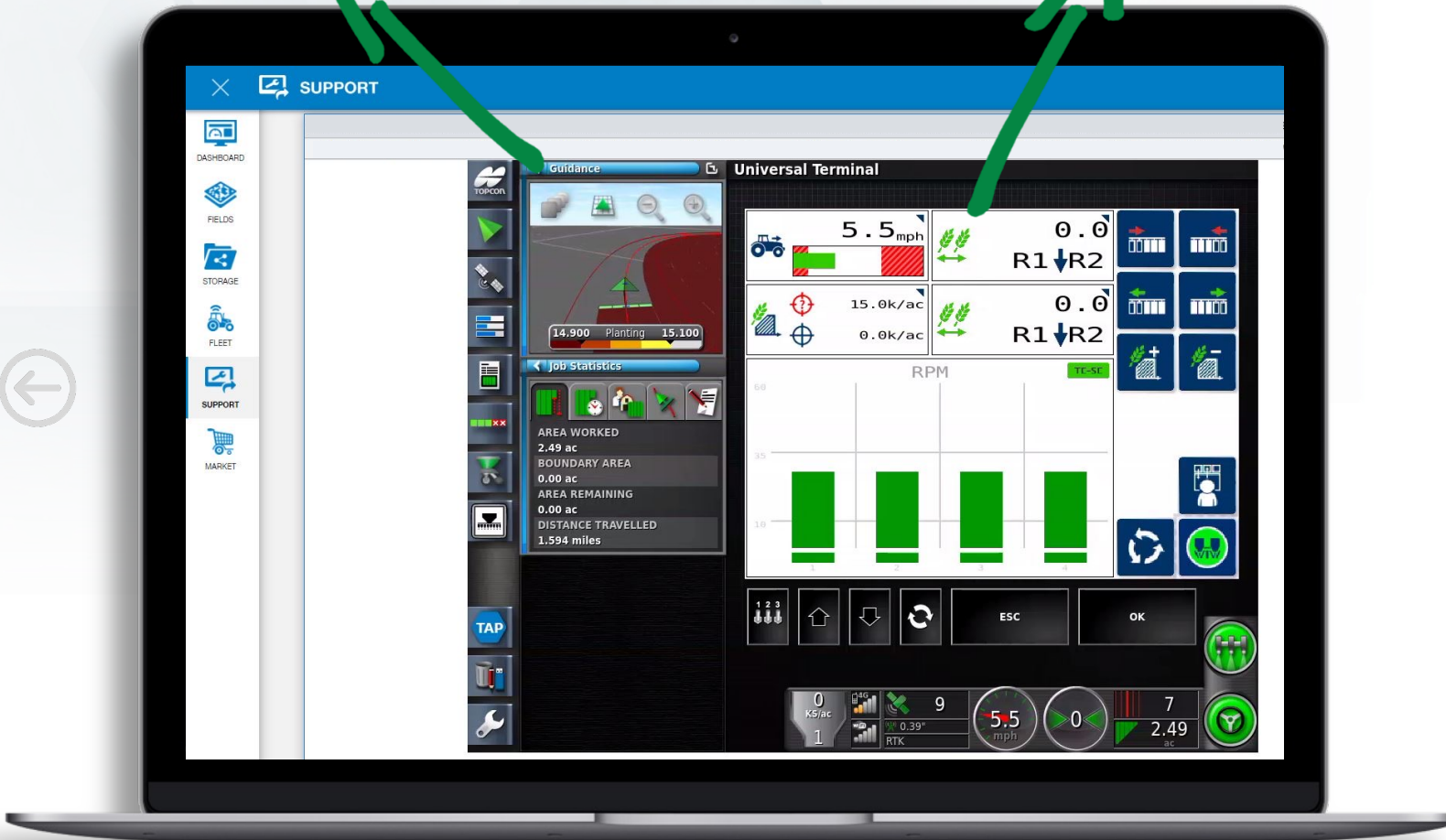
[Learn More](#)





Remotely Display and  
Control Topcon Console

Diagnosis, Calibration,  
and Training



## Remote Support

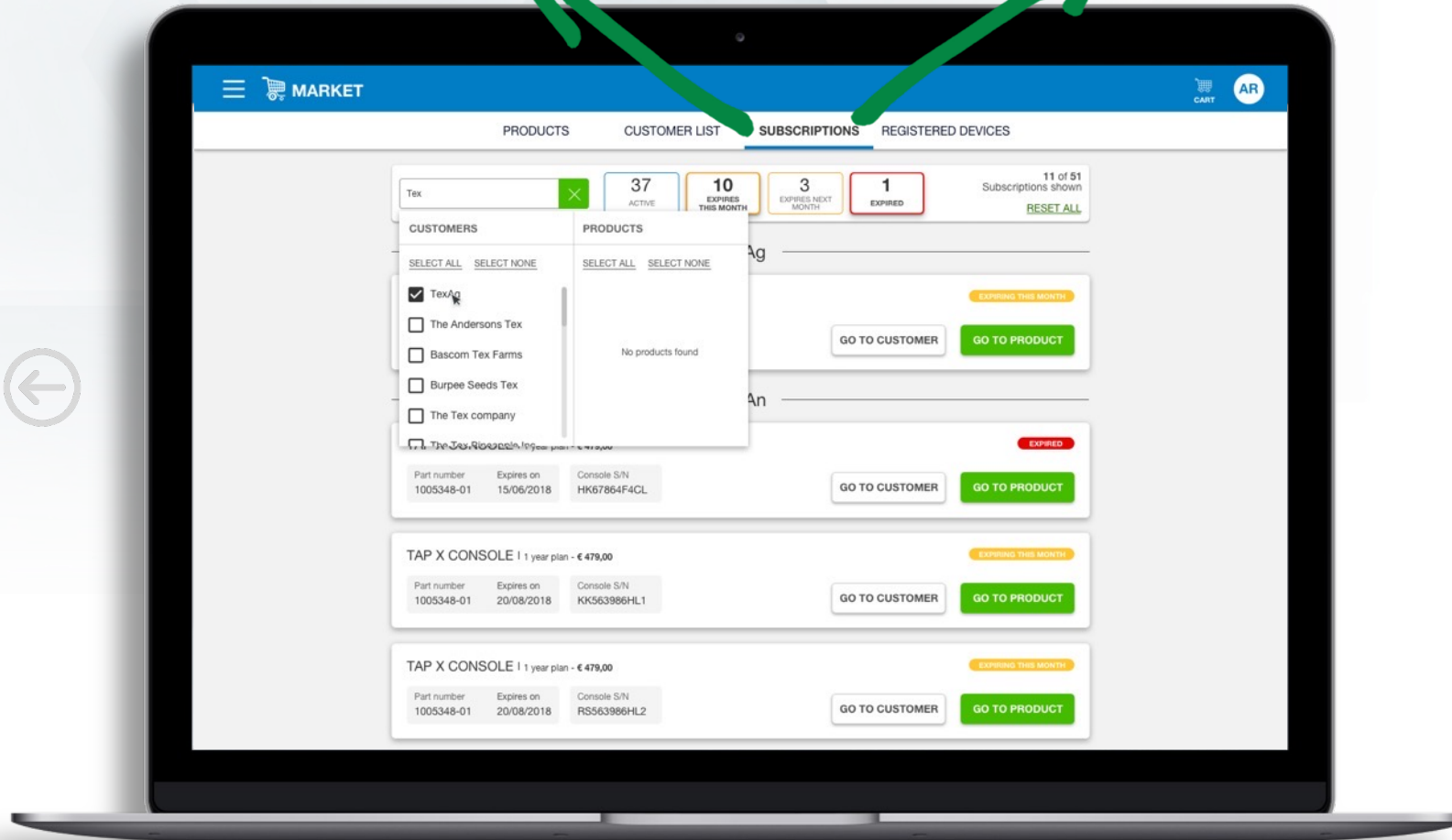
Powerful digital support  
improving performance and  
reducing downtime. Remote  
calibration of Topcon displays  
and software.

[Learn More](#)



Clear Subscription  
Management

Intuitive User  
Management



## Market

Save time and money through a digital marketplace providing flexible subscription-based services. Pay only for what's needed, when it's needed.

[Learn More](#)



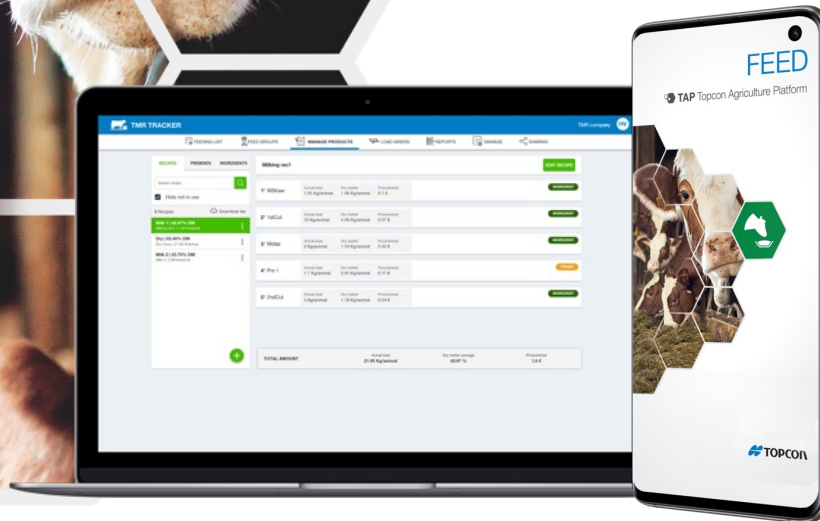




## Feed Management

As feed represents roughly 50% of livestock costs, it's essential to incorporate a precision management plan to maximize returns.

TAP's been designed to ensure your cattle get the proper total mix ratio for optimum performance.





# TAP BACKOFFICE

Integrated Value. Any Data, Anytime.





## TAP BACKOFFICE

Intuitively manage devices and customer information.  
Access all data for invaluable insights, including  
customizable dashboards.





## CloudLynk

Bi-directional data in the field at the machine, where the work is performed.



## Data Plan

Connectivity that covers the globe and managed through the platform.



## Cloud Storage

Unlimited raw data storage synchronized with devices.



## User Interface

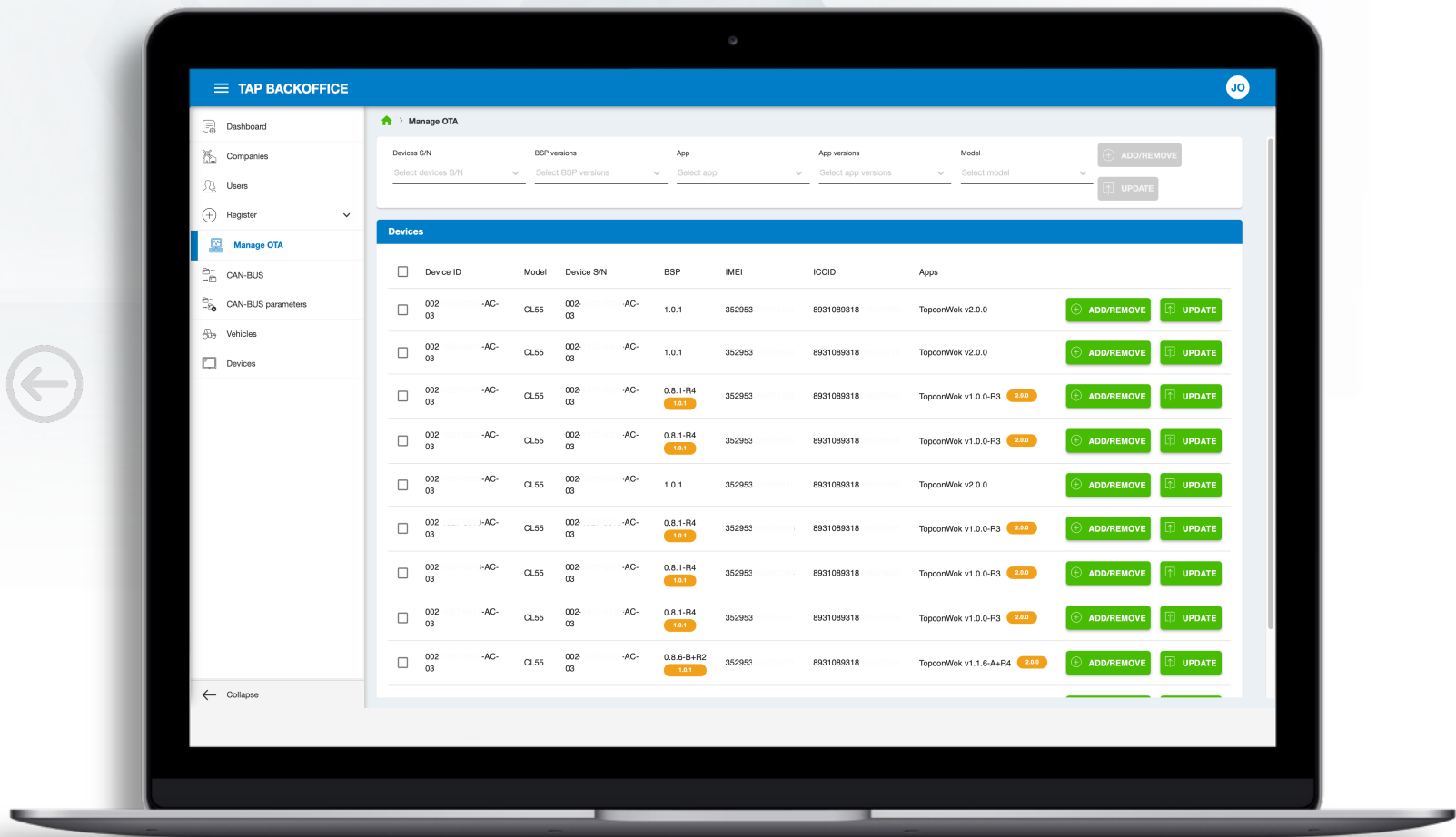
Visualize data and machines. Internal use or expose to your customers.



## Analysis

Analyze all data and setup customized dashboards.

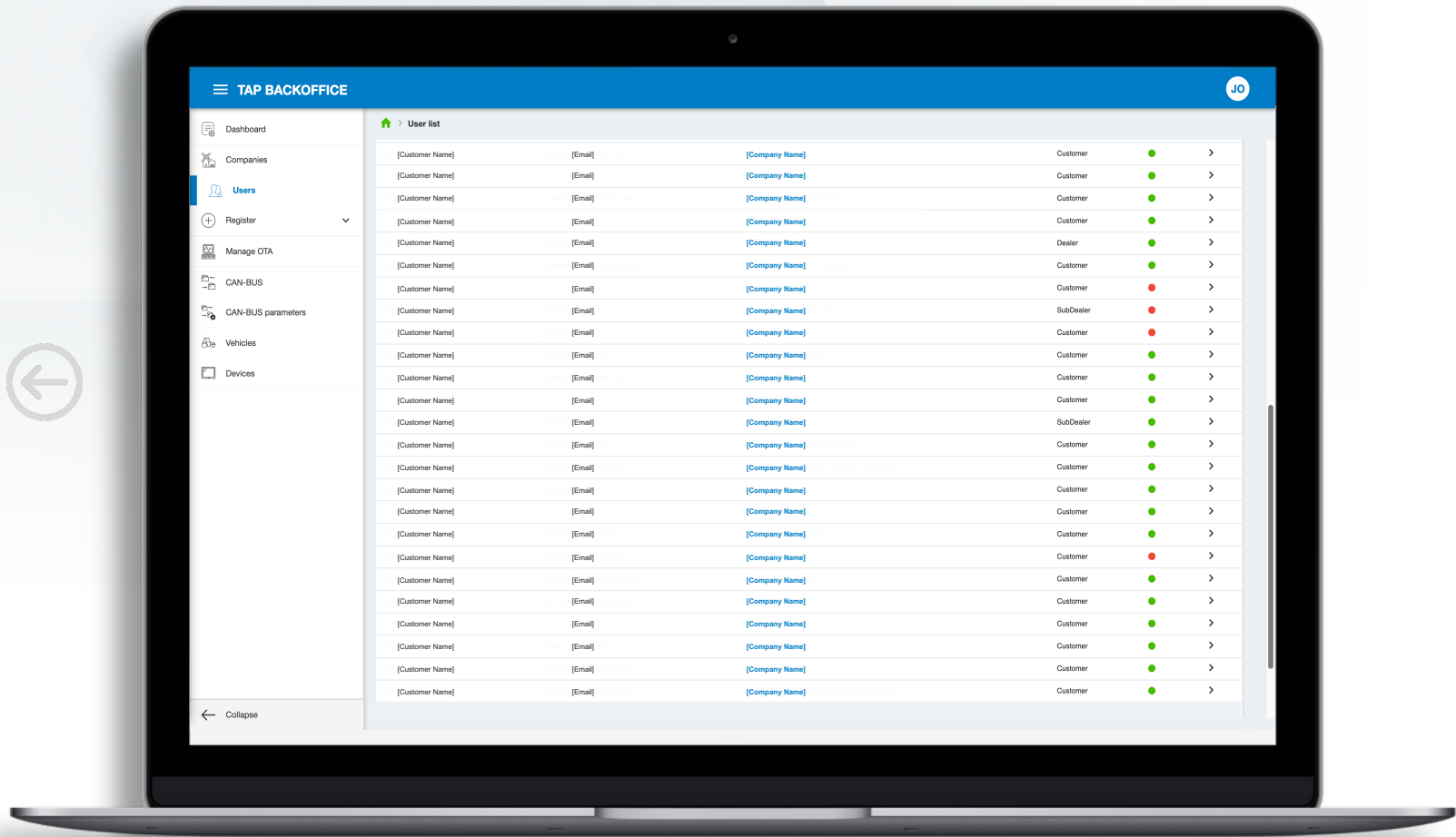




**Device Management**  
Manage all your CloudLynk devices in one common dashboard. Easy device status and firmware updates.

[Learn More](#)



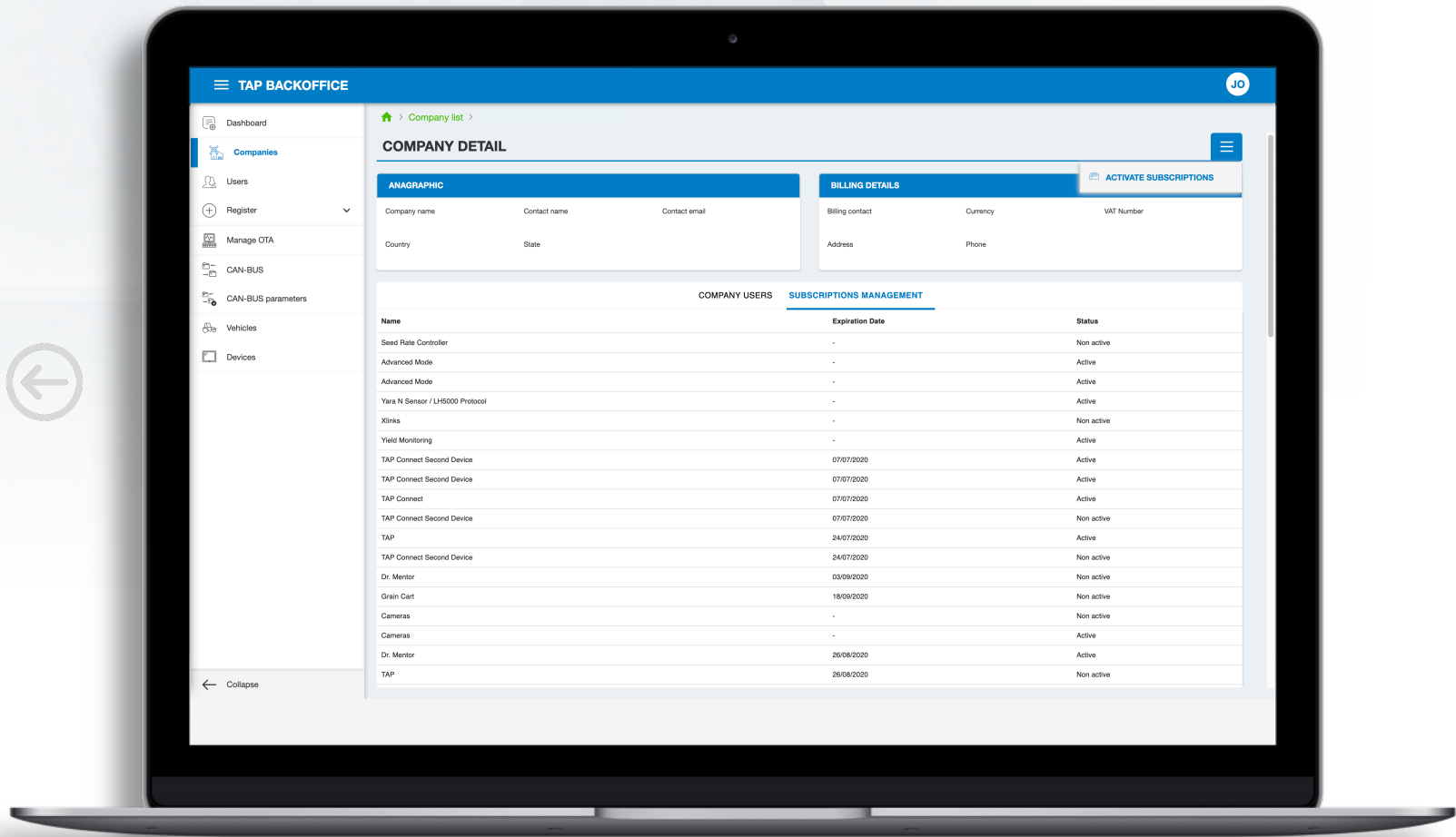


**Backoffice Management**  
Full feature management platform. Create, monitor and maintain customers, devices, data plans and configurations.

[Learn More](#)





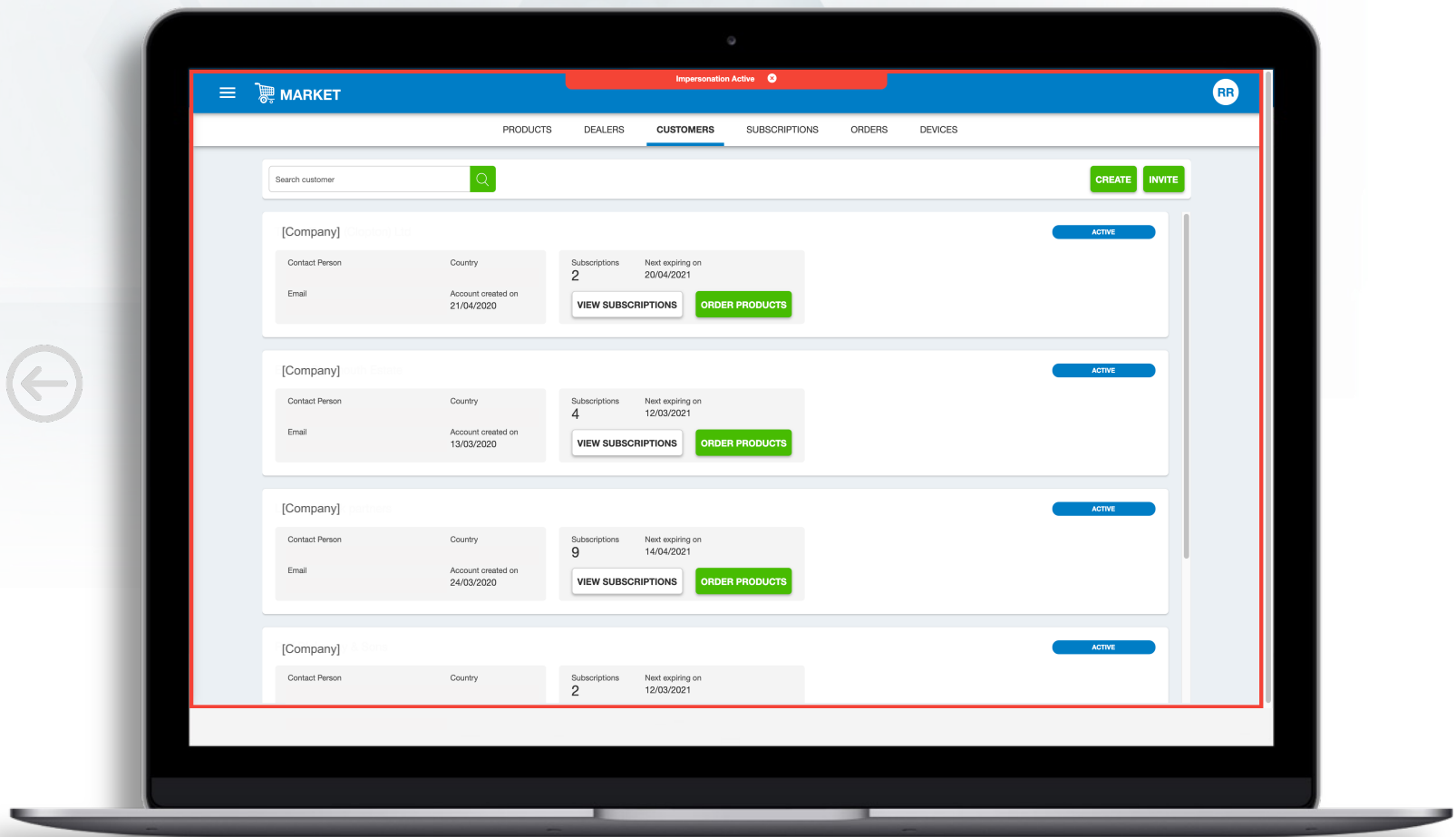


## Activation Management

Manage and deploy all device activations and user security.

[Learn More](#)





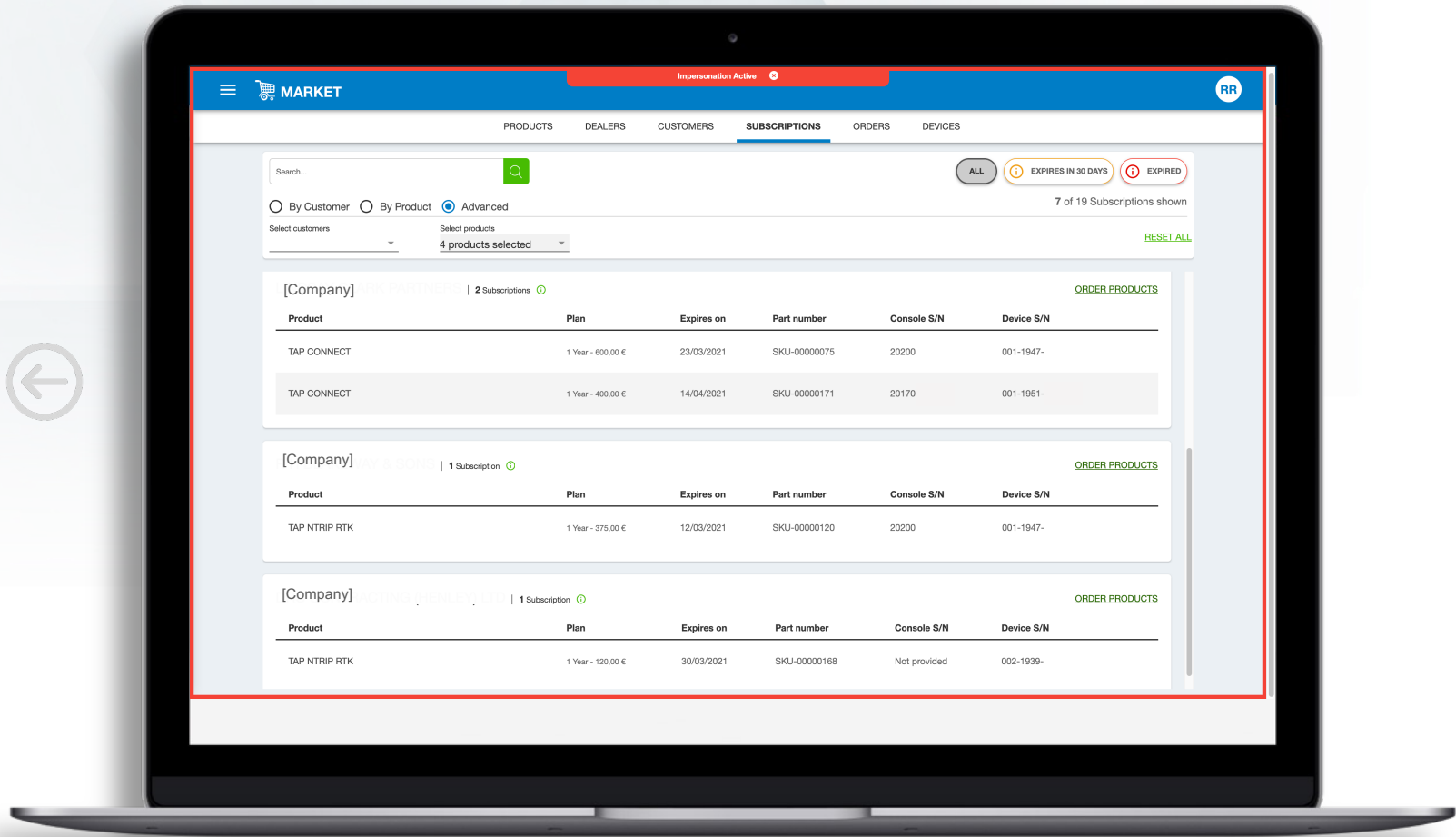
## Dealer Cloud Portal

If your business requires a B2B distribution model, TAP delivers. Field teams need great tools that make SaaS easy.

[Learn More](#)



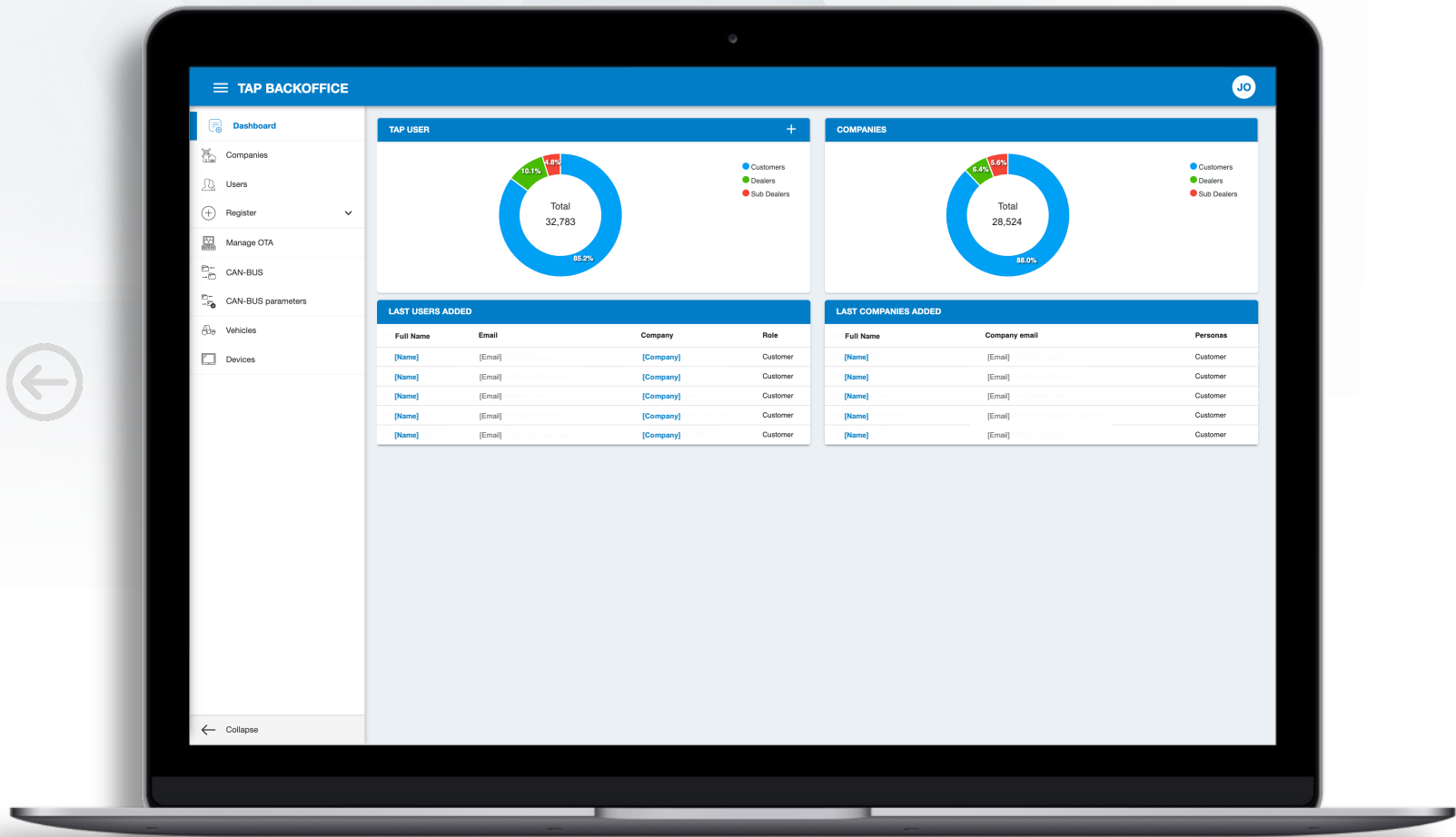




Customer Cloud B2C/B2B  
Flexible for any model. From  
customer creation & currency  
conversions to regionalized  
offerings, TAP has you covered.

[Learn More](#)



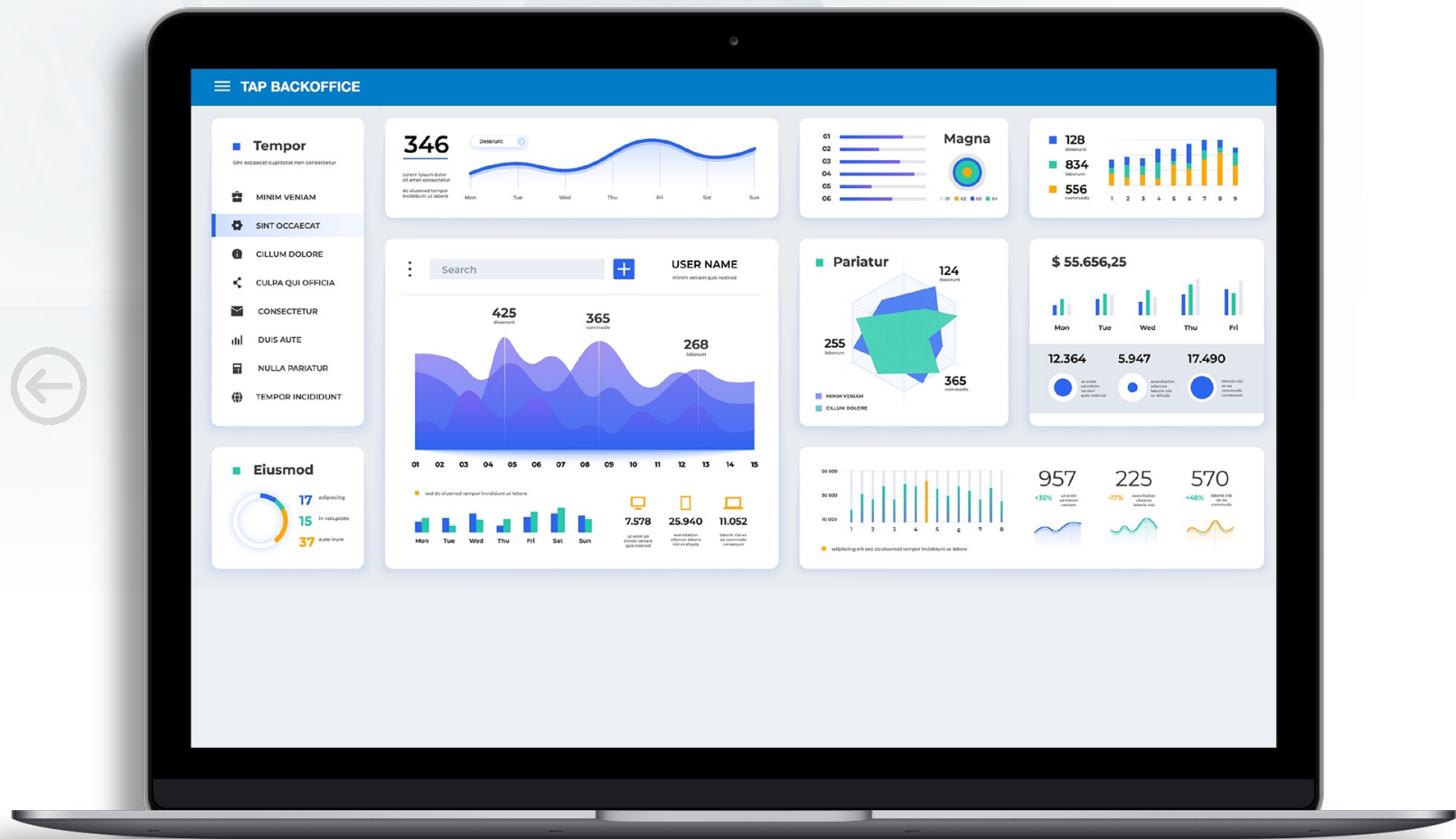


**Dashboard**  
Monitor vital customer  
information in clear,  
ready-to-go dashboards.

[Learn More](#)







## Analysis

Analyze customer information in customizable and integrated dashboards.

[Learn More](#)





## A Smart Model for Inputs Constant Connectivity

With Cloudlynk Devices and TAP, constantly track and extract valuable data to optimize recommendations and performance for increased profitability.







Topcon Cloudlynk  
Devices

Designed to suit virtually any agricultural machine or implement, the Topcon CL-55 cloud connectivity device goes beyond automatic data collection and upload, providing advanced capability for a fully connected ecosystem.





Your files are  
always connected



Designed to provide connectivity to X-Consoles (X25 and X35), the CL-10 cloud connectivity device offers Topcon technology owners a simple, integrated and cost-effective path into digital farm management.





## Planning

Import fields, upload harvest, and any other data to TAP to create your foundation for the upcoming season.

## Seeding

Share data with trusted advisors to create tasks for spring seeding. Form a nutrient program for the upcoming season.





## Crop Care

Right product, right place. Maps and data are transferred between the field and TAP for detailed digital record keeping.

## Harvest

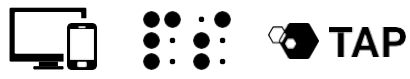
Reap the rewards. Yield maps are transferred seamlessly from the combine into TAP, another season of yield data is captured.

## Gain Insights

Analyze historical seasons data with trusted advisors to gain an accurate and deep understanding of your farm, all managed in TAP.



The modern agricultural workflow.



SENSORS



CL-55



TAP Apps  
3<sup>rd</sup> Parties

DATA ACQUISITION



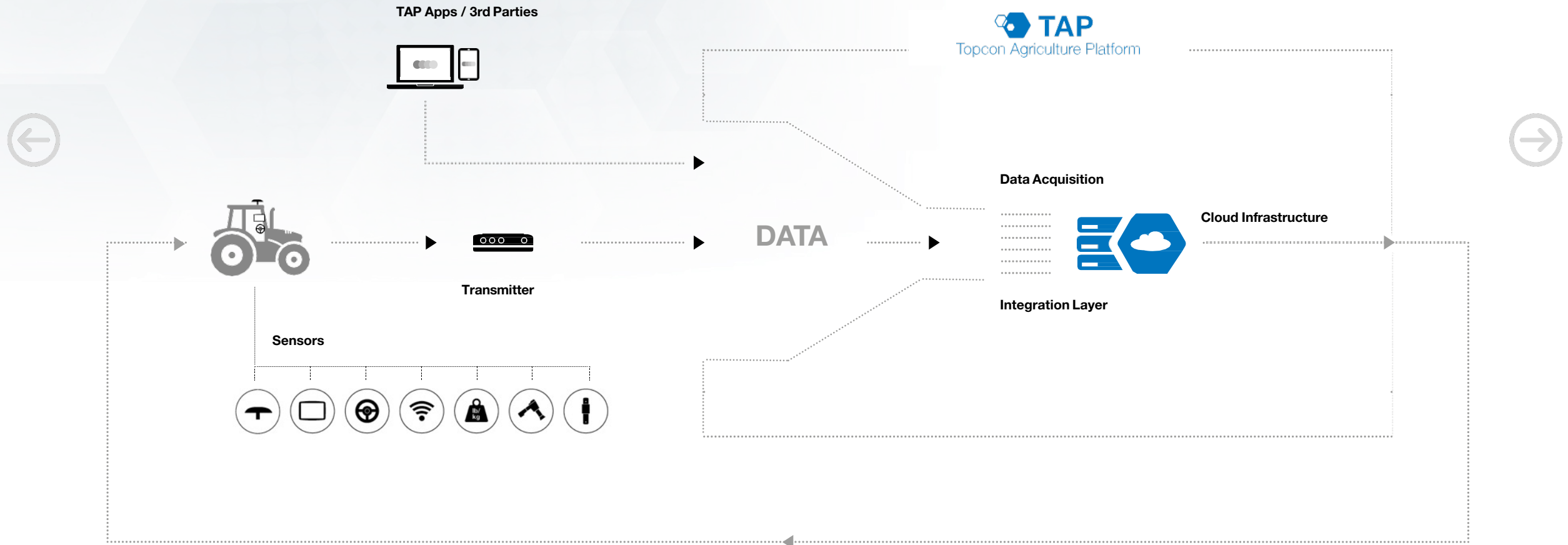
**TAP**  
Topcon Agriculture Platform



DATA LAKE  
PROCESSED DATA  
ANALYTICS / AI  
INTEGRATION  
LAYER



## TAP Architecture

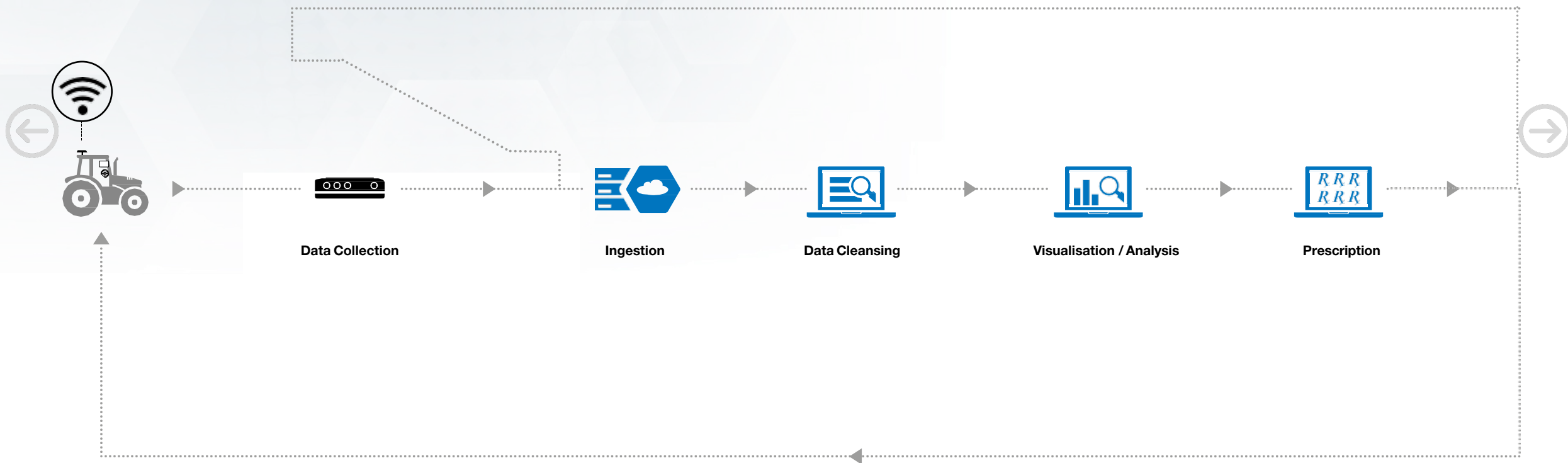




## TAP Workflow



 **TAP**  
Topcon Agriculture Platform





# TAP your Way

Customizable Ecosystem





## CloudLynk

Bi-directional data in the field at the machine, where the work is performed.



## Data Plan

Connectivity that covers the globe and managed through the platform



## Cloud Storage

Unlimited raw data storage synchronized with devices



## User Interface

Visualize data and machines. Internal use or expose to your customers.



## Analysis

Analyze all data and setup customized dashboards.

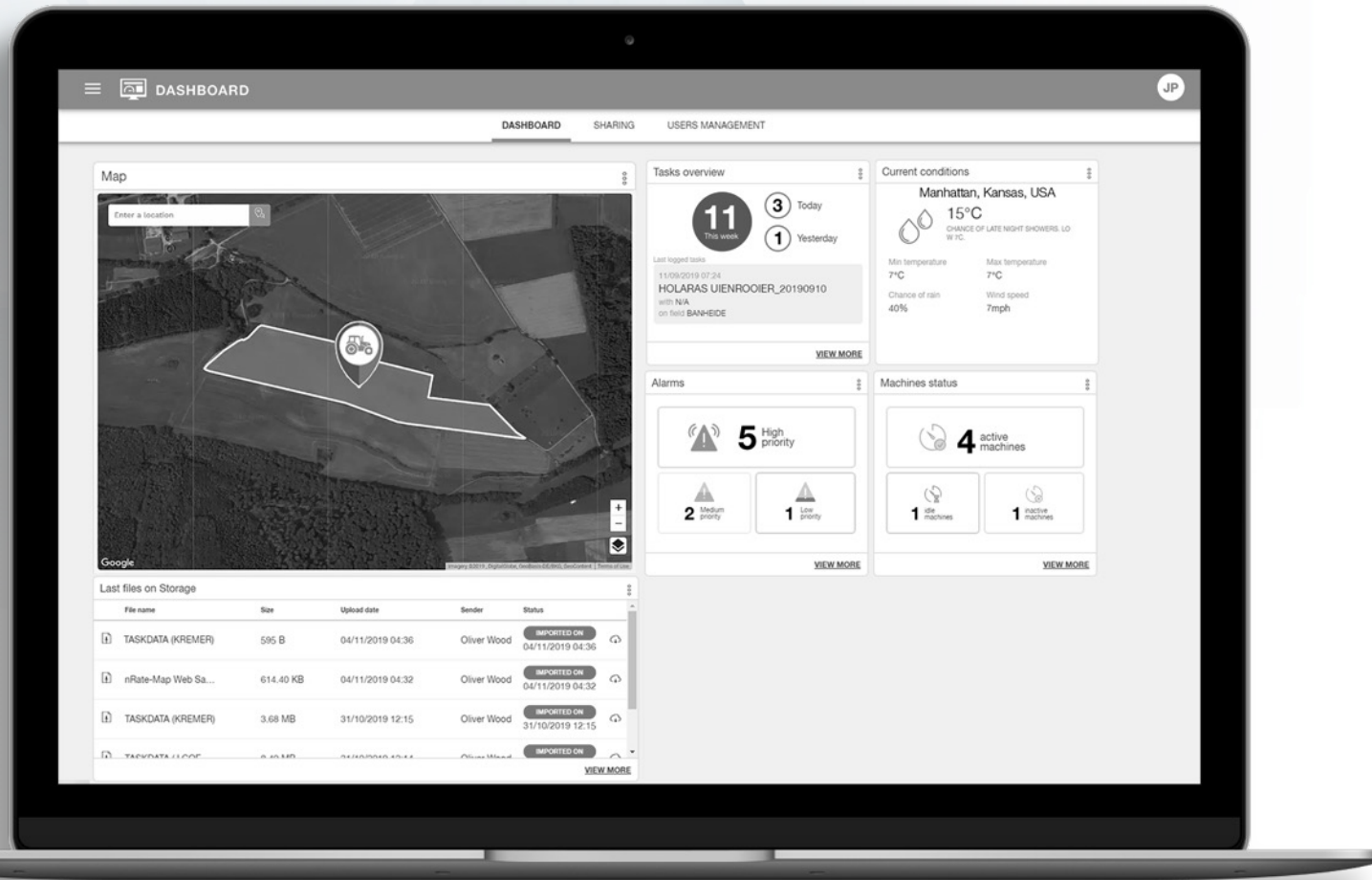




## Customizable UI

Platform appearance, organization and capabilities are fully customizable. Have it your way.

[Learn More](#)





←

Organize. Visualize. Decide.