

Mastering Construction Efficiency with a Simple 3D Laser

Five Reasons this Tool is a Must Have for Every Contractor



WHAT IS THE
LN-150?

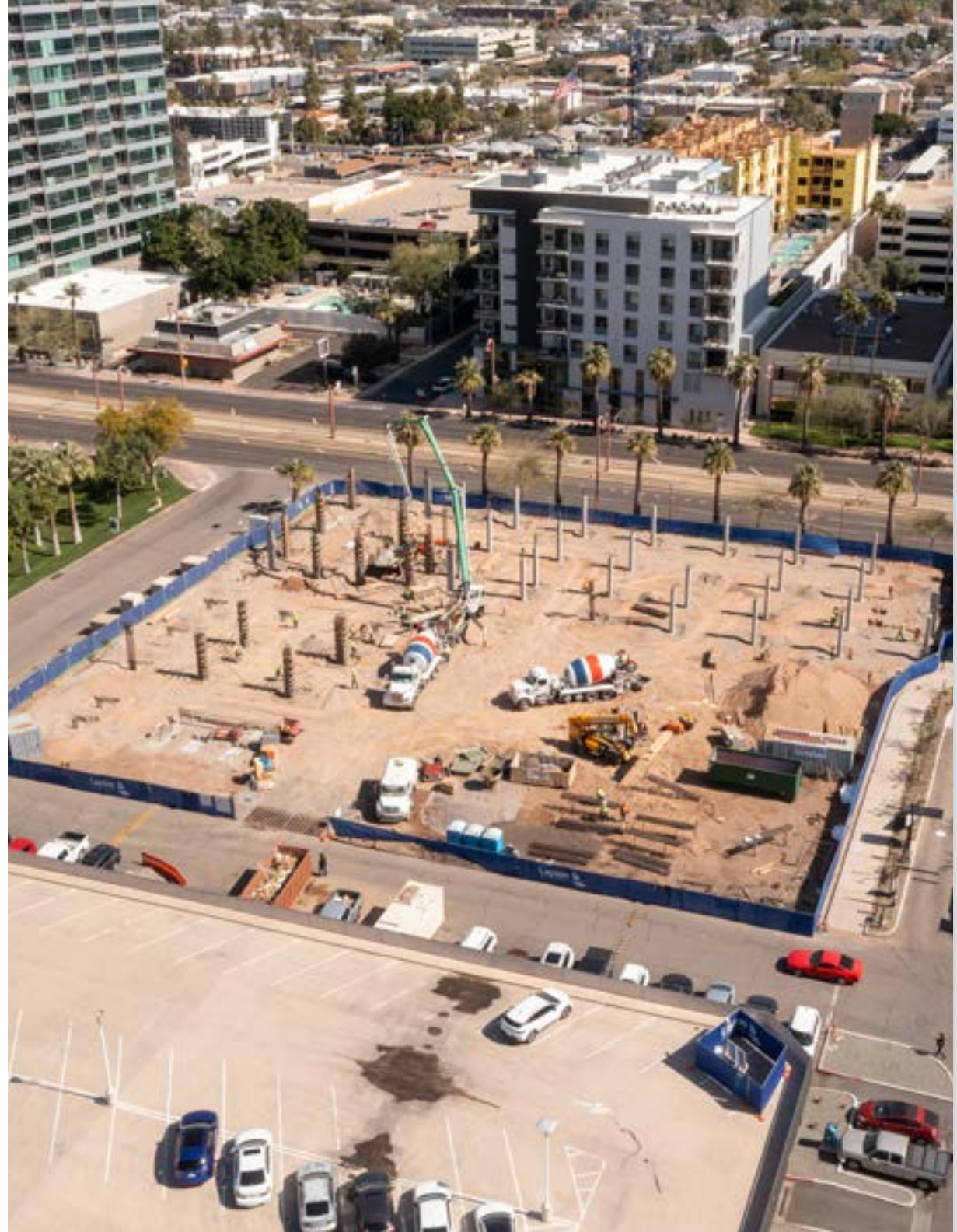
CASE
STUDIES

BENEFITS

WHY
TOPCON?

Table of Contents

Navigate sections by clicking the buttons below.



WHAT IS THE LN-150?

CASE STUDIES

BENEFITS

WHY TOPCON?



LN-150

Introduction

In today's fast-paced construction environment, efficiency and accuracy are paramount. Whether you are a general contractor, subcontractor, or part of a construction crew, the demands of modern projects require tools that can keep up with the pace. Enter the Topcon LN-150, a versatile and easy-to-use 3D laser tool designed to revolutionize your workflow. This eBook will guide you through the key features, use cases, and benefits of this easy-to-learn solution, showing how it can transform your construction projects and drive greater profitability.

WHAT IS THE LN-150?

CASE STUDIES

BENEFITS

WHY TOPCON?

Five Reasons this Tool is a Must Have for Every Contractor

The Topcon LN-150 is an easy-to-use 3D laser packed with features that make it an indispensable tool for any construction professional.

- 1. Versatility**
- 2. Simplicity**
- 3. Productivity**
- 4. Accuracy**
- 5. Profitability**



[WHAT IS THE LN-150?](#)

[CASE STUDIES](#)

[BENEFITS](#)

[WHY TOPCON?](#)

Versatility

This 3D laser is like having an all-star crew at your disposal, enabling one operator to layout forms, position anchor bolts, verify plans, guide compact equipment, and much more. Its applications are vast, including:



Layout Work

Forms | Foundations | Footers | Custom pools | landscaping



Earthmoving Machine Control

Grading pads | Building retaining walls | Installing septic tanks or cutting trenches



Building Projects

Homes | Apartments | Condominiums | Hospitals | Schools



MEP Work

Mechanical | Electrical | Plumbing | Ductwork layout and installation

WHAT IS THE LN-150?

CASE STUDIES

BENEFITS

WHY TOPCON?



Simplicity

Ease of use is a defining feature of the LN-150. This self-leveling 3D laser tool allows a single operator to tackle multiple tasks, such as layout, verification, grading, and trenching, faster and more accurately than traditional methods.

Accuracy

This tool simplifies your workflow by providing increased accuracy at every step of your project. This heightened precision virtually eliminates costly rework, ensuring that the job is done right the first time.

Productivity

With the 3D laser, a single operator can complete construction tasks up to five times faster than traditional methods. This efficiency multiplies your existing team's capabilities, allowing them to focus on other critical tasks, thereby enhancing overall productivity.

Profitability

Efficiency and accuracy translate directly into profitability. By reducing rework and optimizing workflow, the LN-150 allows you to allocate resources more effectively, driving better-quality projects, happier clients, more referrals, and ultimately greater profit.

**WHAT IS THE
LN-150?**

**CASE
STUDIES**

BENEFITS

**WHY
TOPCON?**



Signature Pools

Signature Pools, based in Greenville, South Carolina, showcases the broad acceptance of new layout technology in various industries. Initially adopted by general contractors, advanced layout technology has extended its reach to professionals in building construction, concrete, electrical, HVAC, plumbing, compact equipment, landscaping trades, and even pool designers and installers.

A Game Changer for Pool Design

Signature Pools turned to the simple LN-150 to replace cumbersome, time-intensive layout work. The result? Shortened layout times, improved accuracies, and additional areas where the instrument might pay future dividends.

Streamlined Process

Previously, the layout process involved manual measurements, data entry into CAD, and significant potential for error. With the LN-150, Signature Pools can quickly obtain layout points, transfer data seamlessly, and start designing immediately. The time savings are substantial, cutting site visit times by up to an hour and reducing the risk of inaccuracies.

WHAT IS THE LN-150?

CASE STUDIES

BENEFITS

WHY TOPCON?

Signature Pools

"With the LN-150, we can obtain layout points quickly and accurately, saving us hours on each project. The reduced risk of inaccuracy and the time savings are game-changers for us."

Chris Davis, Lead Designer

"The LN-150 has streamlined our layout process and improved our productivity. We're now able to complete projects faster and with greater precision."

Joe Gatas, Manager of Design and Estimating

WHAT IS THE
LN-150?

CASE
STUDIES

BENEFITS

WHY
TOPCON?



Frederico Construction and Development

Frederico Construction & Development discovered the LN-150's potential during a project at Rochester Institute of Technology (RIT). Faced with the challenge of using smaller machines without the same 3D control benefits as larger ones, they turned to the LN-150.

Enhancing Efficiency

This 3D laser allowed Frederico Construction to reap the benefits of 3D control and use the same solution for design and layout. This dual functionality significantly boosted their operation's efficiency.

Versatility in Action

This easy-to-learn tool's ability to handle both layout and machine control tasks made it an ideal fit for Frederico Construction's varied needs. Their crews could seamlessly switch between surveying and machine control, maximizing productivity and reducing staffing needs.

WHAT IS THE LN-150?

CASE STUDIES

BENEFITS

WHY TOPCON?

Frederico Construction and Development

"MC-Mobile and the LN-150 have transformed our workflow. We've seen significant efficiency gains, and the support from our dealer has been outstanding."

Lee Frederico, Co-owner

"The ease of switching between layout and machine control tasks with the LN-150 is impressive. It's a perfect fit for our needs and has doubled our capabilities."

Thad Anderson, Superintendent

WHAT IS THE
LN-150?

CASE
STUDIES

BENEFITS

WHY
TOPCON?



LN-150

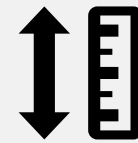
Benefits

The Topcon LN-150 offers numerous benefits that make it a valuable addition to any construction project.



Increased Efficiency

This 3D laser automates repetitive tasks, freeing up your team to focus on high-impact activities. This efficiency translates into faster project completion times and reduced labor costs.



Enhanced Accuracy

Accurate measurements and reliable data are crucial in construction. The LN-150 ensures precision at every stage, reducing the likelihood of costly errors and rework.



Cost Savings

By streamlining workflows and minimizing errors, this simple tool helps you save on labor, materials, and rework expenses. These savings can be reinvested into growing your business.

WHAT IS THE LN-150?

CASE STUDIES

BENEFITS

WHY TOPCON?

The Topcon LN-150 is more than just a 3D laser tool; it's a game-changer for construction professionals. Its versatility, simplicity, productivity, accuracy, and profitability make it an essential asset for any construction project.

Ready to revolutionize your construction workflow? Discover how the Topcon LN-150 can transform your projects and drive greater efficiency. Get started with the Topcon LN-150 today!

For more information or to schedule a demo visit [our website here](#).



WHAT IS THE LN-150?

CASE STUDIES

BENEFITS

WHY TOPCON?



Trust Topcon

We are the ideal partner for developing advanced solutions for your positioning and machine control challenges. Our experience, technical expertise and overall company strength make us uniquely qualified to provide enhanced automation technology and ultimately drive your customers' productivity – along with your market share – to ever higher levels.

SPEED TO MARKET | GLOBAL NETWORK | EXPERIENCED OEM TEAM

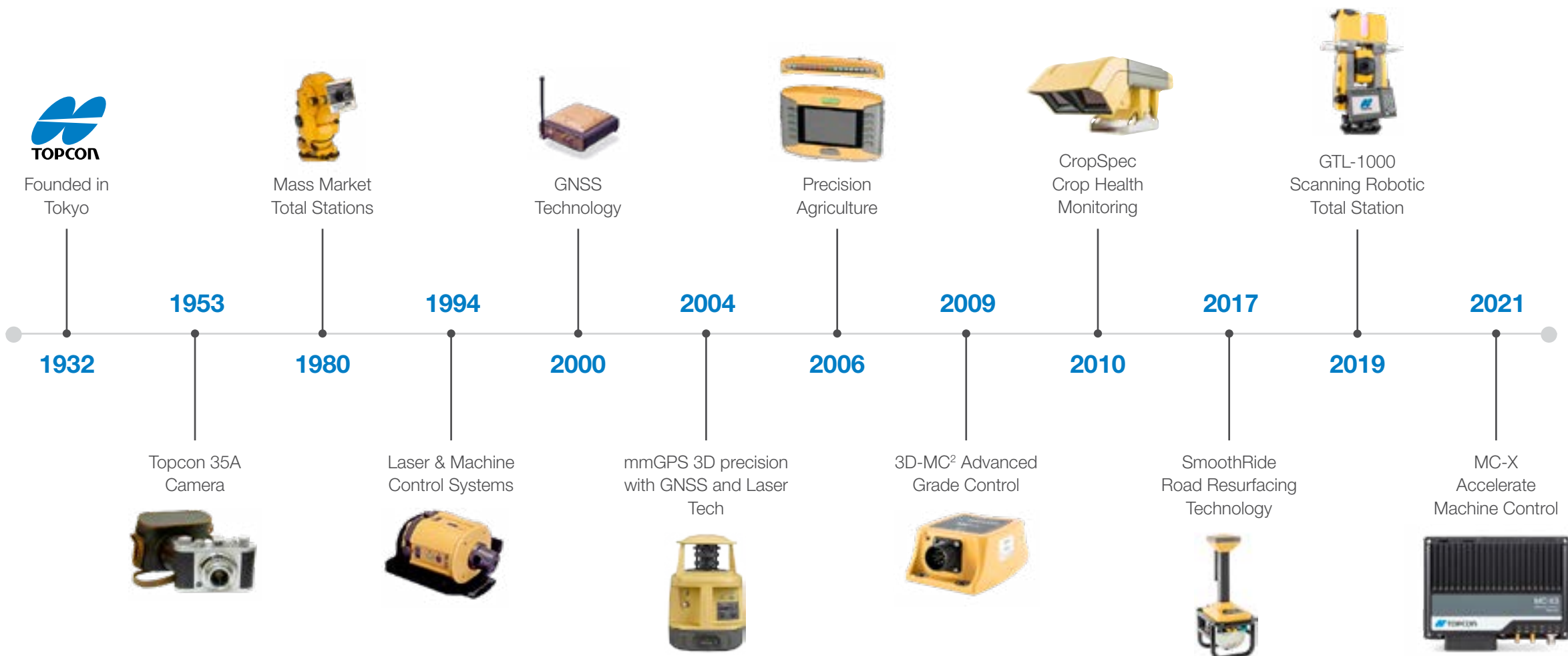
WHAT IS THE
LN-150?

CASE
STUDIES

BENEFITS

WHY
TOPCON?

A History of Topcon Corporation



Trust Topcon to get you there faster with high-quality positioning and automation solutions tailored to your product strategy.

Independent Solutions

In an industry with many contractual alliances, we remain independent. We have the freedom to develop technologies that best fit your unique product goals. Our custom OEM solutions are all clean-sheet designs, providing more opportunities to differentiate your product from the competition.

Speed To Market

Product development carries an inherent pressure to do everything faster and better than before, particularly since technology is only viewed as innovative if it arrives before the competition. Our experience helps simplify and shorten the design process, allowing you to go to market with your product faster – and with the utmost confidence.



Topcon Training Center,
Livermore, CA

Topcon Technology
Roadshow Truck

Topcon Positioning Systems Headquarters,
Livermore, CA

WHAT IS THE LN-150?

CASE STUDIES

BENEFITS

WHY TOPCON?



4900+ Employees | 2100+ Patents



Global Network

With an extensive worldwide network of corporate offices, R&D centers and technical groups, we have an unmatched capability to assist any manufacturer, no matter where they are located, with fully integrated machine automation solutions. This also positions us to create programs to assist and support your dealer networks, directly or through extensive training programs.

Experienced OEM Team

Our experienced OEM team knows what questions need to be answered first and the potential pitfalls to be avoided along the way. Their first objective is to make sure our technology is the right fit for your application, and then be your partner every step of the way.

WHAT IS THE LN-150?

CASE STUDIES

BENEFITS

WHY TOPCON?



topconpositioning.com

Specifications subject to change without notice.
© 2024. Topcon Corporation. All rights reserved. Rev A 7/24